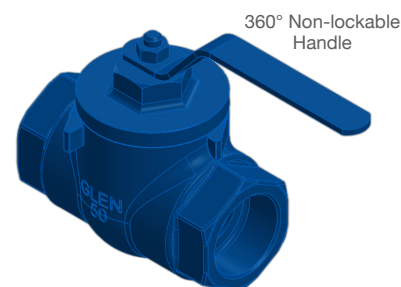
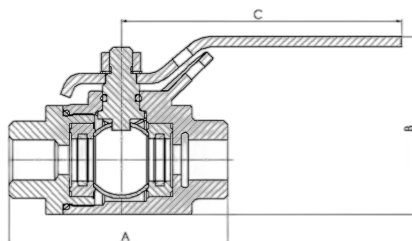




BALL VALVES - FEMALE TO FEMALE (BSP THREAD)

Specifications
Floating Ball Design for improved sealing and higher pressure
Bi-directional operation
Compact valve with minimum parts
Full bore design reduces turbulence and decreases pressure drop through valve
Robust cast body
Spindle designed to prevent possibility of blow out
Lockable and non-lockable handles are available. These handles are replaced easily by removing nut
Working temperature between -20°C and 80°C

Materials of Construction	
Body and Cap	Ductile Iron
Handle	Rotating, Mild steel
Spindle	Stainless Steel (SS) / Mild Steel (MS)
Seats	Reinforced, NBR or Polyurethane
Ball	Stainless Steel
Fasteners	4.8 Carbon Nut and Spring Washer
Thread taper	Tapered (T) / Parallel (P)
Coating	Painted blue (RAL5005 gloss)



Size (mm)	Handle	Lockable	Thread taper	Spindle	A (mm)	B (mm)	C (mm)	Working Pressure (kPa)	Item Number
15	90°	•	P	SS	85	75	75	3500	BA150AAL
15	90°	•	T	SS	85	75	75	3500	BA150BBL
20	90°	•	P	SS	93	95	110	5400	BA200AAL
20	90°	•	T	SS	93	95	110	5400	BA200BBL
25	360°		P	SS	110	105	115	5400	0183032
25	90°		P	SS	110	105	115	5400	0161932
25	90°	•	P	SS	110	105	115	5400	0161542
25	90°	•	T	SS	110	105	115	5400	BA250BBL
32	360°		P	SS	135	120	125	5400	0188032
32	90°		P	SS	135	120	125	5400	0162532
32	90°	•	T	SS	135	120	125	5400	BA320BBL
40	90°	•	P	SS	145	175	250	4000	BA400AAL
40	90°	•	T	SS	145	175	250	4000	BA400BBL
50	360°		P	SS	145	175	250	4000	0191032
50	90°		P	SS	140	155	165	4000	0163732
50	90°	•	T	SS	140	155	165	4000	BA500BBL
80	360°		P	MS	255	225	195	3700	0194032
80	90°	•	P	MS	255	225	195	3700	0194042
100	360°		P	MS	255	255	195	2700	0195062
100	90°	•	P	MS	255	255	195	2700	0195042