

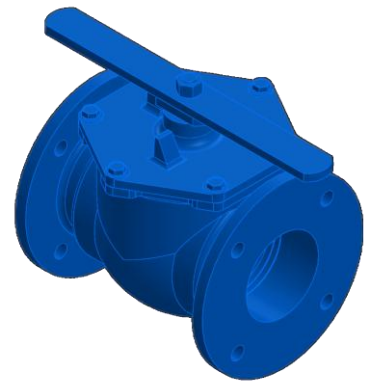
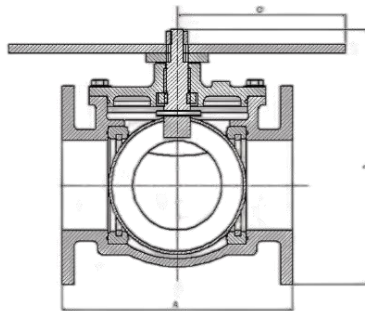
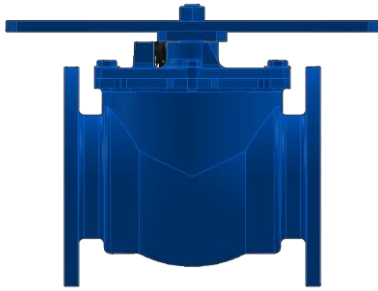
Glen Flanged Ball Valves

Features and Advantages

- Floating Ball Design for improved sealing and higher pressure
- Bi-directional operation
- Compact valve with minimum parts
- Full bore design reduces turbulence and decreases pressure drop through valve
- Robust cast body
- Spindle designed to prevent possibility of blow out
- Valve maintenance done in-situ
- Handles replaced easily by removing nut
- Working temperature of -20°C to 80°C

Applications

Body and Caps	Ductile Iron
Handle	Mild Steel
Spindle	Stainless Steel (SS)/ Mild Steel (MS)
Seats	Reinforced NBR or Polyurethane
Ball	Stainless Steel
Fasteners	4.8 Carbon Nut and Spring Washer
Coating	Painted - RAL5005 Gloss



Size (mm)	Handle	Flange Drilling	Spindle	A (mm)	B (mm)	C (mm)	Working Pressure	Item Number
50	360°	1000/3	MS	175	178	190	4000	0191532
50	360°	1600/3	MS	180	178	190	4000	0192032
50	360°	Table D	MS	175	178	190	4000	0191432
80	360°	1000/3	SS	218	190	215	2700	0194832
80	360°	1600/3	SS	220	190	215	2700	0194532
80	360°	Table D	SS	209	190	215	2700	0194432
100	360°	1000/3	MS	262	275	195	2700	0195932
100	360°	1600/3	MS	266	275	195	2700	0195732
100	360°	Table D	MS	262	275	195	2700	0195232